



National
Qualifications
2021 ASSESSMENT RESOURCE

X807/75/02

Biology
Section 1 — Questions

Duration — 2 hours 30 minutes

Instructions for the completion of Section 1 are given on *page 02* of your question and answer booklet X807/75/01.

Record your answers on the answer grid on *page 03* of your question and answer booklet.

Before leaving the examination room you must give your question and answer booklet to the Invigilator; if you do not, you may lose all the marks for this paper.



* X 8 0 7 7 5 0 2 *

SECTION 1 — 25 marks

Attempt ALL questions

1. Which row in the table describes the effects on red blood cells if they were left in the liquids shown for 20 minutes?

	Liquid	
	Pure water	10% salt solution
A	swell and burst	plasmolyse
B	swell and burst	shrink
C	become turgid	plasmolyse
D	become turgid	shrink

2. Which of the following statements is true for a DNA molecule?

- A It is double-stranded and found in the nucleus
- B It is single-stranded and found in the nucleus
- C It is double-stranded and codes for making sugars
- D It is single-stranded and codes for making proteins

3. A molecule of DNA has 4450 bases of which 890 are cytosine.

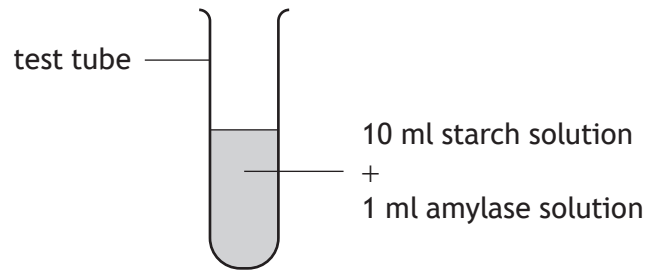
The number of adenine bases in this DNA molecule is

- A 890
- B 1335
- C 1780
- D 2670.

4. Which of the following statements matches a type of protein to its function?

- A Receptors target specific enzymes
- B Enzymes carry chemical messages in the blood
- C Antibodies destroy specific pathogens
- D Hormones carry electrical impulses

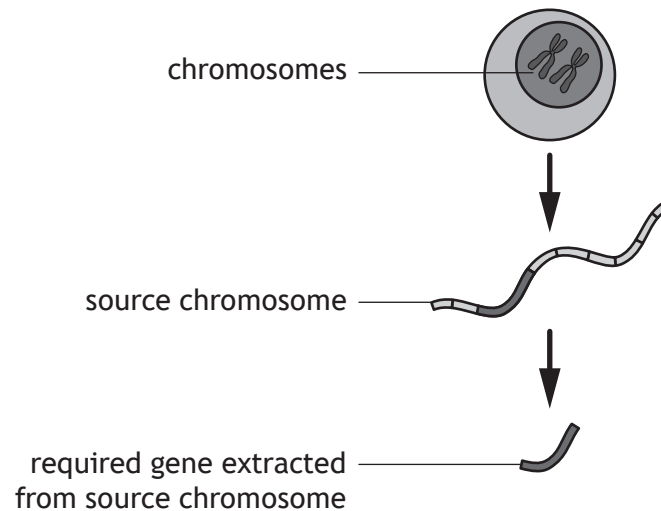
5. A student set up an experiment to investigate the breakdown of starch by the enzyme amylase.



Which row in the table describes the contents of a control tube for this experiment?

	Starch solution (ml)	Amylase solution (ml)	Water (ml)
A	0	10	1
B	10	0	1
C	1	10	0
D	10	0	0

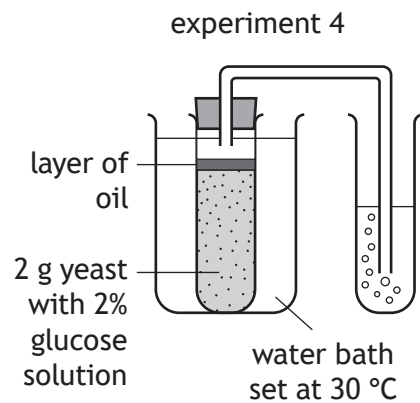
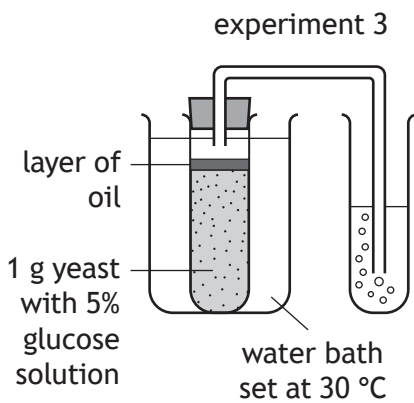
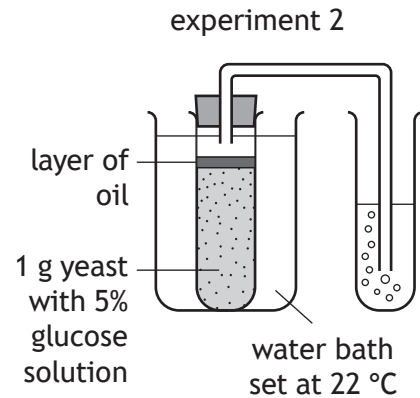
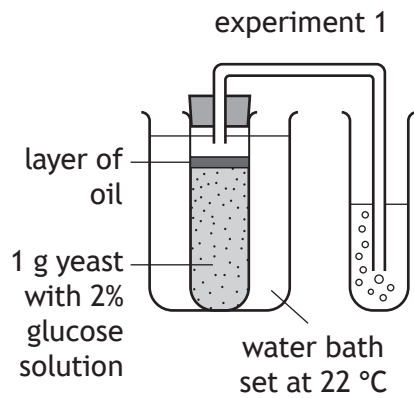
6. The diagram shows part of the process of genetic engineering.



The extraction of the required gene from the source chromosome involves the use of

- A bacteria
- B hormones
- C plasmids
- D enzymes.

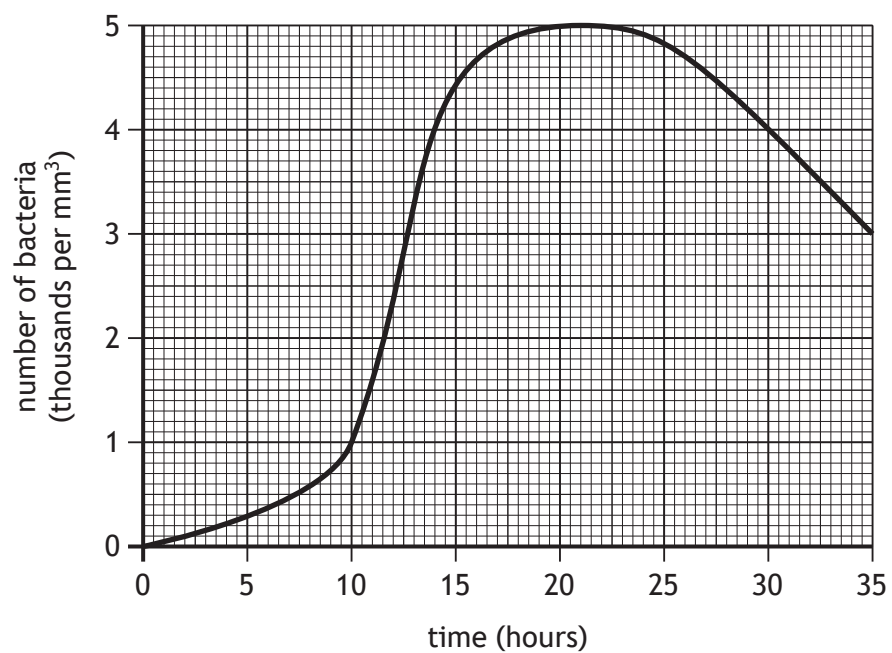
7. The diagrams show four experiments carried out as part of an investigation into the rate of respiration in yeast.



Which two experiments should be compared to show the effect of temperature on the rate of reaction?

- A 1 and 2
- B 1 and 3
- C 2 and 3
- D 1 and 4

8. The graph shows the number of bacteria growing in a fermenter over 30 hours.



For how many hours was the number of bacteria 4000 per mm³ or higher?

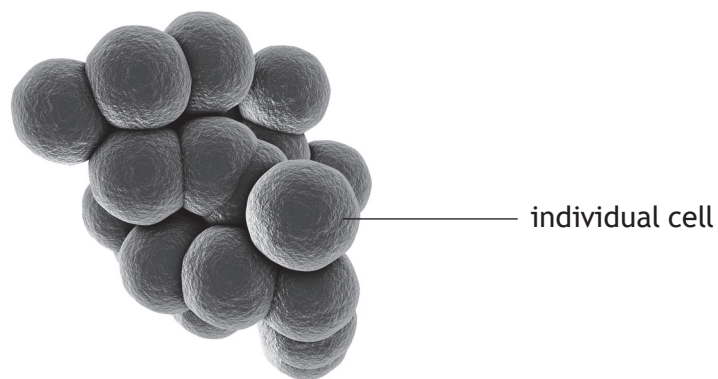
- A 14
- B 16
- C 30
- D 32

[Turn over

9. The following key can be used to identify bacteria.

- | | | |
|---|--|------------------------|
| 1 | Individual cells are spherical in shape | go to 2 |
| | Individual cells are rod-shaped | go to 3 |
| 2 | Cells are arranged in a single chain | <i>Streptococcus</i> |
| | Cells are not arranged in a single chain | go to 4 |
| 3 | Cells are arranged in a single chain | <i>Streptobacillus</i> |
| | Cells are not arranged in a single chain | <i>Clostridium</i> |
| 4 | Cells are arranged in pairs | <i>Diplococcus</i> |
| | Cells are arranged in groups | <i>Staphylococcus</i> |

Use the key to identify the bacteria shown.



- A *Clostridium*
- B *Staphylococcus*
- C *Diplococcus*
- D *Streptococcus*

10. A body cell of an organism containing 24 chromosomes is represented as (24).

Which column in the table represents the number of cells produced and the number of chromosomes in each cell after two cycles of cell division?

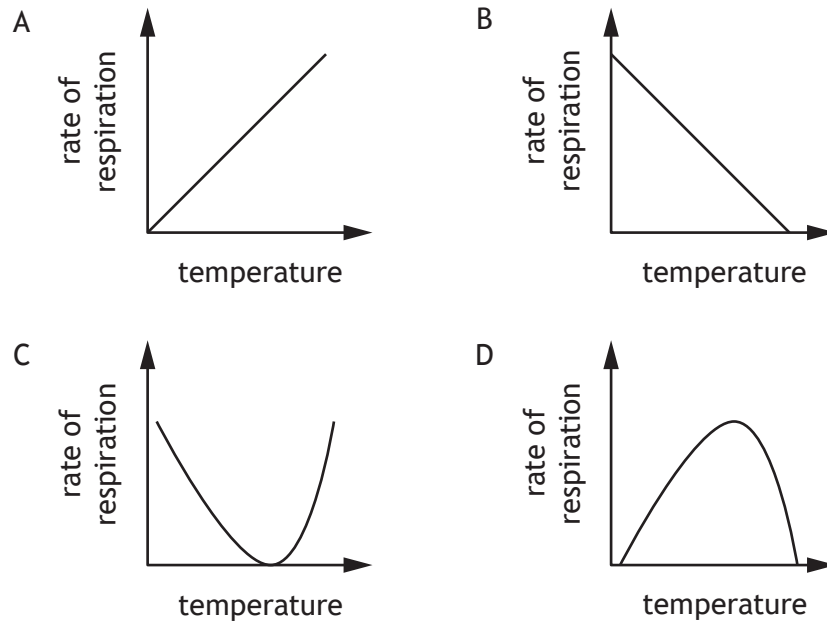
	A	B	C	D
Original body cell	(24)	(24)	(24)	(24)
After one cycle	↓ (24)	↓ (48)	↙ ↘ (12) (12)	↙ ↘ (24) (24)
After two cycles	↓ (24)	↓ (96)	↙ ↘ ↙ ↘ (6) (6) (6) (6)	↙ ↘ ↙ ↘ (24) (24) (24) (24)

11. Which row in the table shows the effect a change in blood glucose levels has on glucagon production?

	Change in blood glucose level	Glucagon production
A	decreases	increases
B	increases	increases
C	increases	decreases
D	decreases	decreases

[Turn over

12. Which graph shows the effect of increasing temperature on the rate of respiration in germinating peas?



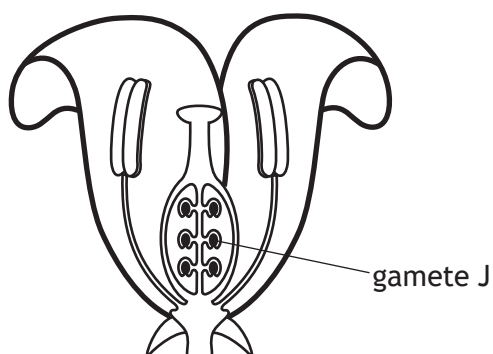
13. Which of the following is regulated by the medulla?

- A Thinking
- B Breathing
- C Hearing
- D Balancing

14. Which features are found in phloem tissue?

- A Sieve plates and companion cells
- B Hollow tubes and companion cells
- C Sieve plates and lignin
- D Hollow tubes and lignin

15. The diagram shows the main parts of a flower.



Which row in the table identifies gamete J and its site of production?

	Gamete J	Site of production
A	ovule	anther
B	pollen	anther
C	pollen	ovary
D	ovule	ovary

16. Maize plants can vary in height. They can produce either purple or yellow grains, and the grain shape can be either wrinkled or smooth.

Which row in the table identifies the type of variation shown by each of these characteristics?

	Height	Grain colour	Grain shape
A	continuous	continuous	discrete
B	discrete	continuous	continuous
C	continuous	discrete	discrete
D	discrete	discrete	continuous

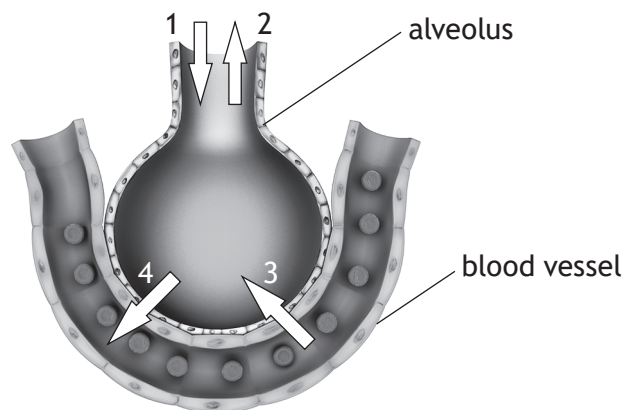
[Turn over

17. Which of the following statements describes a feature of red blood cells?

- A They are biconcave to absorb more oxygen
- B They bind to oxygen to form haemoglobin
- C They carry out phagocytosis
- D They are part of the immune system

18. The diagram represents one alveolus in the lungs.

Which two arrows show the direction of flow of carbon dioxide produced by respiration?



- A 1 and 4
- B 1 and 3
- C 2 and 3
- D 2 and 4

19. The total variety of all living things on Earth is described as the

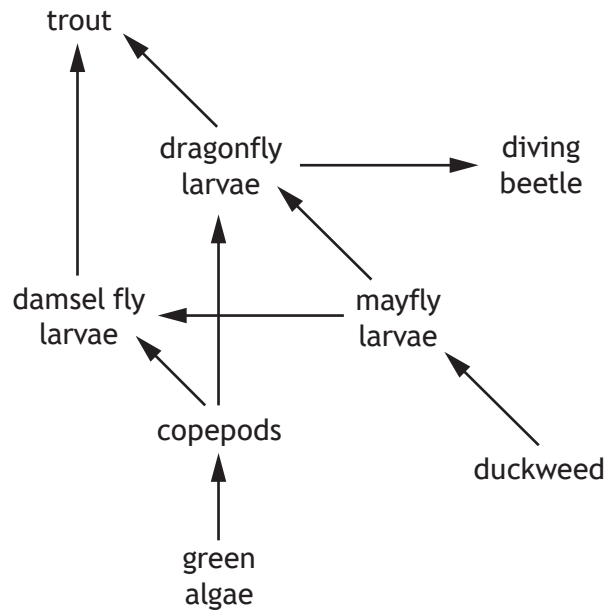
- A biodiversity
- B species
- C community
- D population.

20. In an investigation into density of planting, it was found that a lower mass of grain was harvested per plant when the density of wheat plants was at its highest.

This was due to

- A less disease
- B more nutrients available
- C less space for weeds
- D more competition for light and nutrients.

21. The diagram shows part of a food web in a freshwater ecosystem.



A disease caused most of the dragonfly larvae to die.

Which of the following describes the most likely effect on the copepod and diving beetle populations?

- A Both species will increase
- B Both species will decrease
- C Copepods will increase and the diving beetles will decrease
- D Copepods will decrease and the diving beetles will increase

22. Which of the following statements would **not** be suitable advice for surveying an area using a transect line?

- A Throw the quadrats randomly onto the survey area
- B Carry out the survey more than once
- C Use the same size of quadrat at each sample site
- D Take lots of samples along the transect line

23. A marine food chain is shown.



The quantity of energy available to the killer whale is the energy that the seal used for

- A swimming
- B keeping warm
- C growth
- D catching cod.

24. Which row in the table identifies the effects of an algal bloom in a freshwater loch?

	Light levels	Number of bacteria	Oxygen levels	Variety of other species
A	increase	increase	increase	decrease
B	decrease	decrease	decrease	increase
C	increase	increase	decrease	decrease
D	decrease	increase	decrease	decrease

25. The following three processes occur during speciation.

- 1 Mutation
- 2 Natural selection
- 3 Isolation

The order in which they occur is

- A 3, 2, 1
- B 1, 2, 3
- C 3, 1, 2
- D 2, 3, 1.

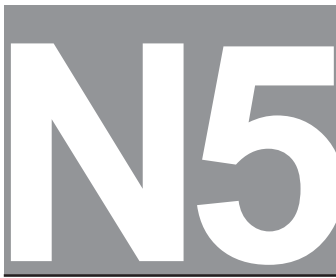
**[END OF SECTION 1. NOW ATTEMPT THE QUESTIONS IN SECTION 2 OF
YOUR QUESTION AND ANSWER BOOKLET.]**

Acknowledgement of copyright

Question 9 Kateryna Kon/shutterstock.com

Question 18 sciencepics/shutterstock.com

FOR OFFICIAL USE



National
Qualifications
2021 ASSESSMENT RESOURCE

Mark

--

X807/75/01

Biology
Section 1 — Answer grid
and Section 2

Duration — 2 hours 30 minutes



Fill in these boxes and read what is printed below.

Full name of centre

--

Town

--

Forename(s)

--

Surname

--

Number of seat

--

Date of birth

Day

--	--

Month

--	--

Year

--	--

Scottish candidate number

--	--	--	--	--	--	--	--	--	--

Total marks — 100

SECTION 1 — 25 marks

Attempt ALL questions.

Instructions for the completion of Section 1 are given on *page 02*.

SECTION 2 — 75 marks

Attempt ALL questions.

Write your answers clearly in the spaces provided in this booklet. Additional space for answers and rough work is provided at the end of this booklet. If you use this space you must clearly identify the question number you are attempting. Any rough work must be written in this booklet. Score through your rough work when you have written your final copy.

Use **blue** or **black** ink.

Before leaving the examination room you must give this booklet to the Invigilator; if you do not, you may lose all the marks for this paper.



The questions for Section 1 are contained in the question paper X807/75/02.

Read these and record your answers on the answer grid on *page 03* opposite.

Use **blue** or **black** ink. Do NOT use gel pens or pencil.

1. The answer to each question is **either** A, B, C or D. Decide what your answer is, then fill in the appropriate bubble (see sample question below).
2. There is **only one correct** answer to each question.
3. Any rough working should be done on the additional space for answers and rough work at the end of this booklet.

Sample question

The thigh bone is called the

- A humerus
- B femur
- C tibia
- D fibula.

The correct answer is **B** — femur. The answer **B** bubble has been clearly filled in (see below).

A	B	C	D
<input type="radio"/>	<input checked="" type="radio"/>	<input type="radio"/>	<input type="radio"/>

Changing an answer

If you decide to change your answer, cancel your first answer by putting a cross through it (see below) and fill in the answer you want. The answer below has been changed to **D**.

A	B	C	D
<input type="radio"/>	<input checked="" type="radio"/>	<input type="radio"/>	<input checked="" type="radio"/>

If you then decide to change back to an answer you have already scored out, put a tick (✓) to the **right** of the answer you want, as shown below:

A	B	C	D
<input type="radio"/>	<input checked="" type="radio"/> ✓	<input type="radio"/>	<input checked="" type="radio"/>

or

A	B	C	D
<input type="radio"/>	<input checked="" type="radio"/> ✓	<input type="radio"/>	<input type="radio"/>



* X 8 0 7 7 5 0 1 0 2 *

SECTION 1 — Answer grid



	A	B	C	D
1	<input type="radio"/>	<input type="radio"/>	<input type="radio"/>	<input type="radio"/>
2	<input type="radio"/>	<input type="radio"/>	<input type="radio"/>	<input type="radio"/>
3	<input type="radio"/>	<input type="radio"/>	<input type="radio"/>	<input type="radio"/>
4	<input type="radio"/>	<input type="radio"/>	<input type="radio"/>	<input type="radio"/>
5	<input type="radio"/>	<input type="radio"/>	<input type="radio"/>	<input type="radio"/>
6	<input type="radio"/>	<input type="radio"/>	<input type="radio"/>	<input type="radio"/>
7	<input type="radio"/>	<input type="radio"/>	<input type="radio"/>	<input type="radio"/>
8	<input type="radio"/>	<input type="radio"/>	<input type="radio"/>	<input type="radio"/>
9	<input type="radio"/>	<input type="radio"/>	<input type="radio"/>	<input type="radio"/>
10	<input type="radio"/>	<input type="radio"/>	<input type="radio"/>	<input type="radio"/>
11	<input type="radio"/>	<input type="radio"/>	<input type="radio"/>	<input type="radio"/>
12	<input type="radio"/>	<input type="radio"/>	<input type="radio"/>	<input type="radio"/>
13	<input type="radio"/>	<input type="radio"/>	<input type="radio"/>	<input type="radio"/>
14	<input type="radio"/>	<input type="radio"/>	<input type="radio"/>	<input type="radio"/>
15	<input type="radio"/>	<input type="radio"/>	<input type="radio"/>	<input type="radio"/>
16	<input type="radio"/>	<input type="radio"/>	<input type="radio"/>	<input type="radio"/>
17	<input type="radio"/>	<input type="radio"/>	<input type="radio"/>	<input type="radio"/>
18	<input type="radio"/>	<input type="radio"/>	<input type="radio"/>	<input type="radio"/>
19	<input type="radio"/>	<input type="radio"/>	<input type="radio"/>	<input type="radio"/>
20	<input type="radio"/>	<input type="radio"/>	<input type="radio"/>	<input type="radio"/>
21	<input type="radio"/>	<input type="radio"/>	<input type="radio"/>	<input type="radio"/>
22	<input type="radio"/>	<input type="radio"/>	<input type="radio"/>	<input type="radio"/>
23	<input type="radio"/>	<input type="radio"/>	<input type="radio"/>	<input type="radio"/>
24	<input type="radio"/>	<input type="radio"/>	<input type="radio"/>	<input type="radio"/>
25	<input type="radio"/>	<input type="radio"/>	<input type="radio"/>	<input type="radio"/>



[BLANK PAGE]

DO NOT WRITE ON THIS PAGE



1. The diagram shows a typical green plant cell and some of its structures.



- (a) (i) Using a letter from the diagram, identify one structure that would also be found in an animal cell. 1

Letter _____

- (ii) Choose one structure labelled in the diagram and state its function. 1

Letter _____

Function _____

- (b) The table shows different types of cells and their average cell width.

Cell type	Average cell width (μm)
onion epidermis	201
human liver	20
human egg	130
yeast	8
<i>Bacillus</i> bacterium	3

Calculate how many times wider an onion epidermis cell is than a *Bacillus* bacterium cell. 1

Space for calculation



2. Pieces of beetroot and rhubarb tissue were placed in different concentrations of sugar solution. After 30 minutes, the number of plasmolysed cells in a sample of 50 cells was counted under a microscope.

The results are shown in the table.

Concentration of sugar solution (mol/l)	Number of plasmolysed cells	
	Beetroot	Rhubarb
0.30	0	8
0.35	3	15
0.40	9	30
0.45	23	38
0.50	33	44
0.55	50	50

(a) Use the information in the table to

- (i) identify the concentration of sugar solution in which 30% of the rhubarb tissue cells are plasmolysed.

1

Space for calculation

_____ mol/l

- (ii) identify the concentration of sugar solution in the beetroot cells.

1

_____ mol/l



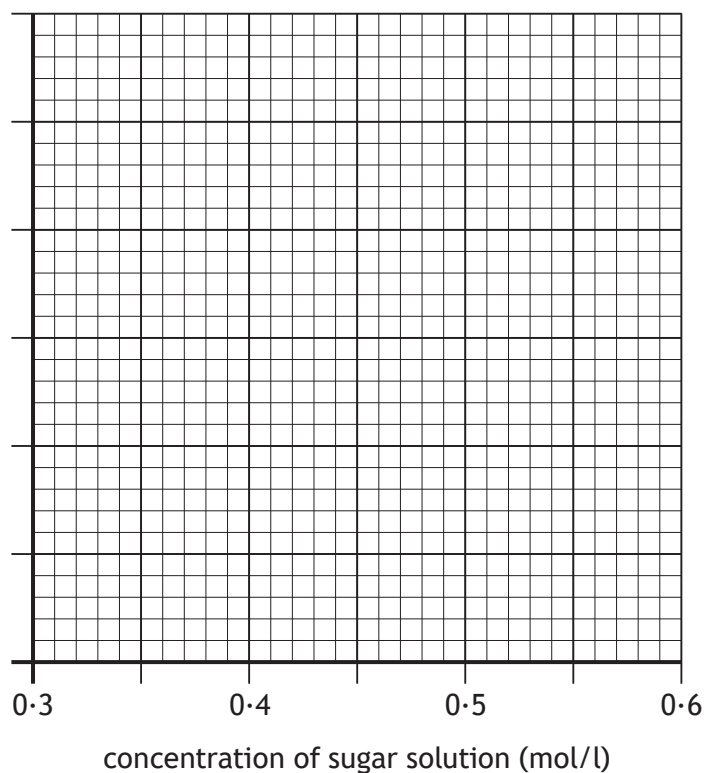
* X 8 0 7 7 5 0 1 0 6 *

2. (continued)

- (b) On the grid, complete the vertical axis and plot a line graph to show the effect of concentration of sugar solution on the number of plasmolysed rhubarb cells.

2

(An additional grid, if required, can be found on *page 29*.)

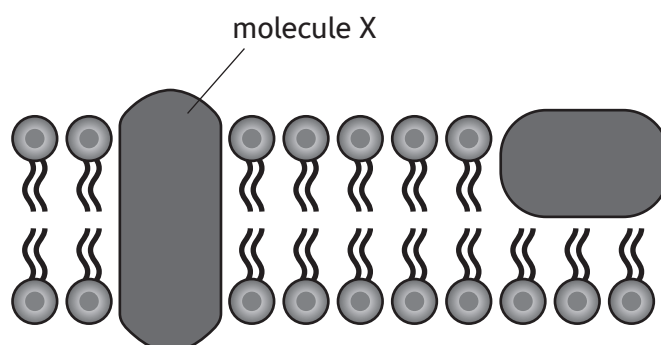


[Turn over



* X 8 0 7 7 5 0 1 0 7 *

3. The diagram shows a section of a cell membrane.



- (a) Molecule X is involved in active transport.

Name this type of molecule.

1

- (b) Describe the differences in the processes of osmosis and active transport.

3

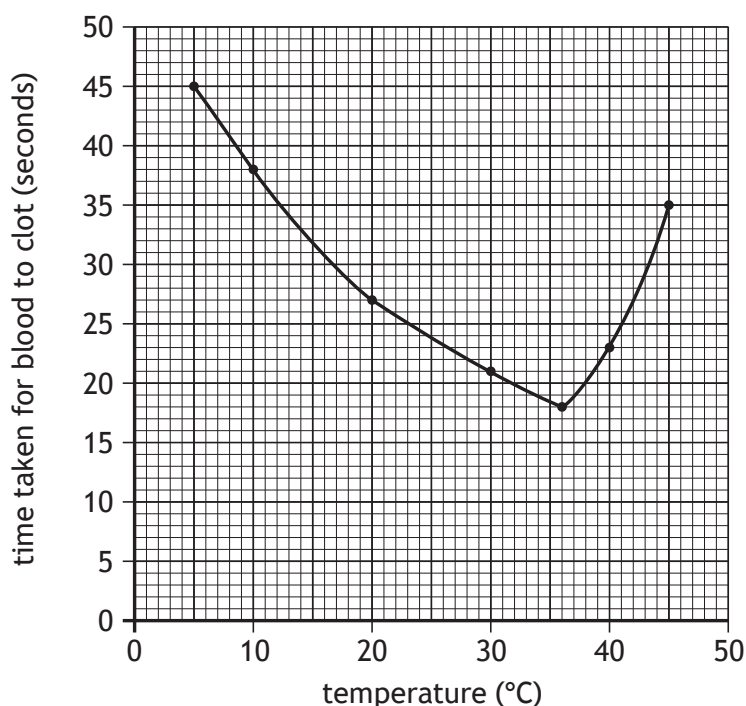
4. When a person cuts their finger, a blood clot forms at the wound. To form the clot, an enzyme converts a soluble protein into an insoluble protein.

(a) The soluble protein is the substrate for the enzyme.

Name the part of the enzyme that binds to its substrate.

1

(b) The graph shows the time taken for the enzyme to clot samples of blood at different temperatures.



(i) Identify the optimum temperature for this enzyme.

1

_____°C

(ii) An enzyme can be completely denatured at very high temperatures, meaning that it can no longer catalyse its reaction.

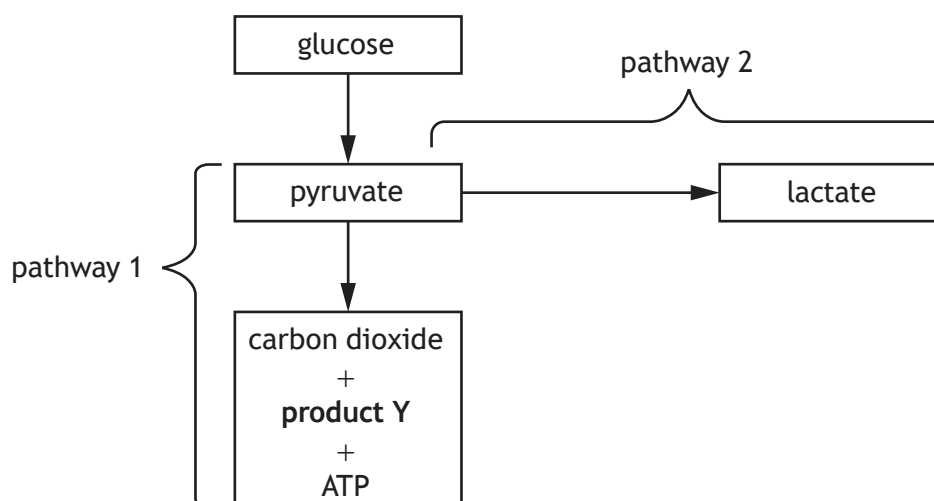
Describe what has happened to the enzyme **and** explain why the reaction no longer occurs.

2



* X 8 0 7 7 5 0 1 0 9 *

5. (a) The diagram represents two possible pathways when glucose is broken down in muscle cells.



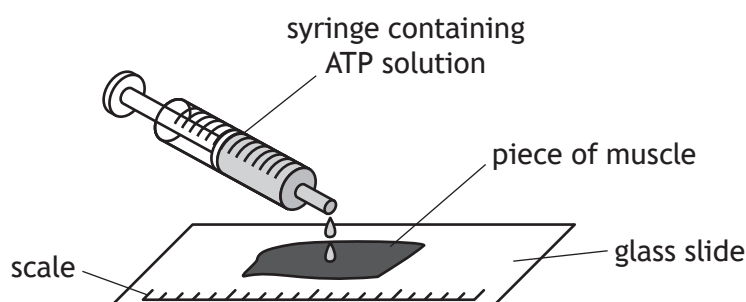
- (i) Name product Y. 1
- _____
- (ii) Pathway 2 only occurs in the absence of a particular substance. Name this substance. 1
- _____
- (iii) State the yield of ATP molecules when a glucose molecule is broken down to pyruvate. 1
- _____

5. (continued)

MARKS
DO NOT
WRITE IN
THIS
MARGIN

- (b) Muscles decrease in length as they contract.

The diagram shows part of an investigation into the effect of ATP concentration on muscle contraction.



The table shows the results of the investigation.

ATP concentration (mg/100 ml)	Length of muscle (mm)			Percentage decrease in length
	At start	After 10 minutes	Decrease	
100	25	24.2	0.8	3.2
500	35	31.5	3.5	10
750	30	24.6	5.4	

- (i) Complete the table by calculating the percentage decrease in the length of the muscle when the ATP concentration was 750 mg/100 ml.

1

Space for calculation

- (ii) Explain why the percentage decrease in length was calculated.

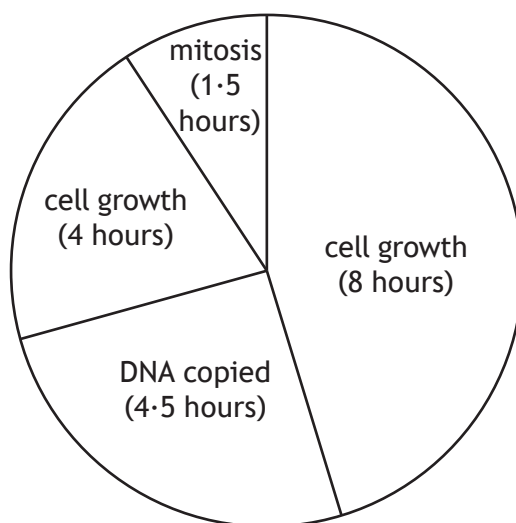
1

- (iii) Describe the relationship between the ATP concentration and muscle contraction.

1



6. The diagram shows the time taken for the stages that occur when a cell divides and grows.



- (a) Calculate the simplest whole number ratio of the times taken for the stages shown in the diagram.

1

Space for calculation

_____ : _____ : _____
mitosis DNA copied cell growth

- (b) Name the cell structure in which mitosis begins.

1

- (c) Name the structure that pulls chromatids apart from each other during mitosis.

1

- (d) Human cells produced by mitosis are diploid.
Explain what is meant by the term diploid.

1



* X 8 0 7 7 5 0 1 1 2 *

7. Describe the stages of protein production in a cell.

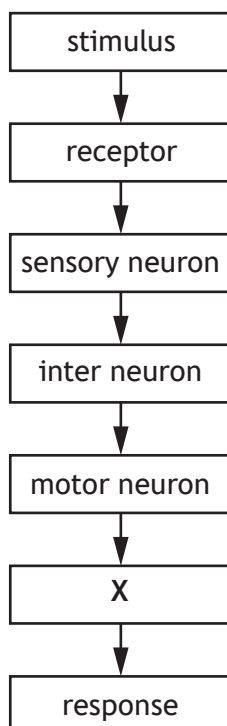
4

[Turn over



* X 8 0 7 7 5 0 1 1 3 *

8. The flow chart shows the pathway of a reflex action involved in response to pain.



- (a) Identify structure X.

1

- (b) Name the part of the body where the inter neuron of this reflex arc is found.

1

- (c) Describe how messages travel along an inter neuron **and** are then transferred from the inter neuron to a motor neuron.

2

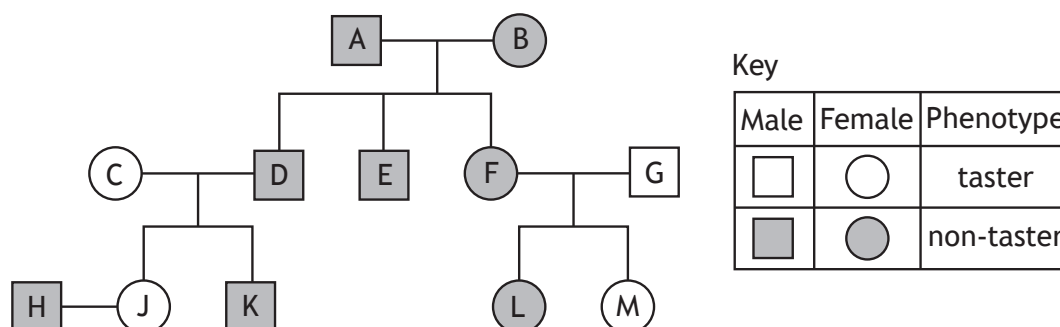


* X 8 0 7 7 5 0 1 1 4 *

9. (a) The compound phenylthiocarbamide (PTC) tastes very bitter to some people, while others are unable to taste it. The ability to taste PTC is an inherited characteristic controlled by the dominant allele.

T represents the tasting allele and t represents the non-tasting allele.

The family tree shows the pattern of inheritance for this characteristic.



- (i) Give the genotype of individual G.

1

- (ii) Identify one heterozygous female.

1

Letter _____

- (iii) State how many individuals in this family tree are homozygous dominant.

1

- (iv) Individuals H and J are having a child.

Predict the percentage chance of their child being able to taste PTC.

1

Space for calculation

_____ %

- (b) Characteristics controlled by more than one gene show continuous variation.

Explain the term continuous variation.

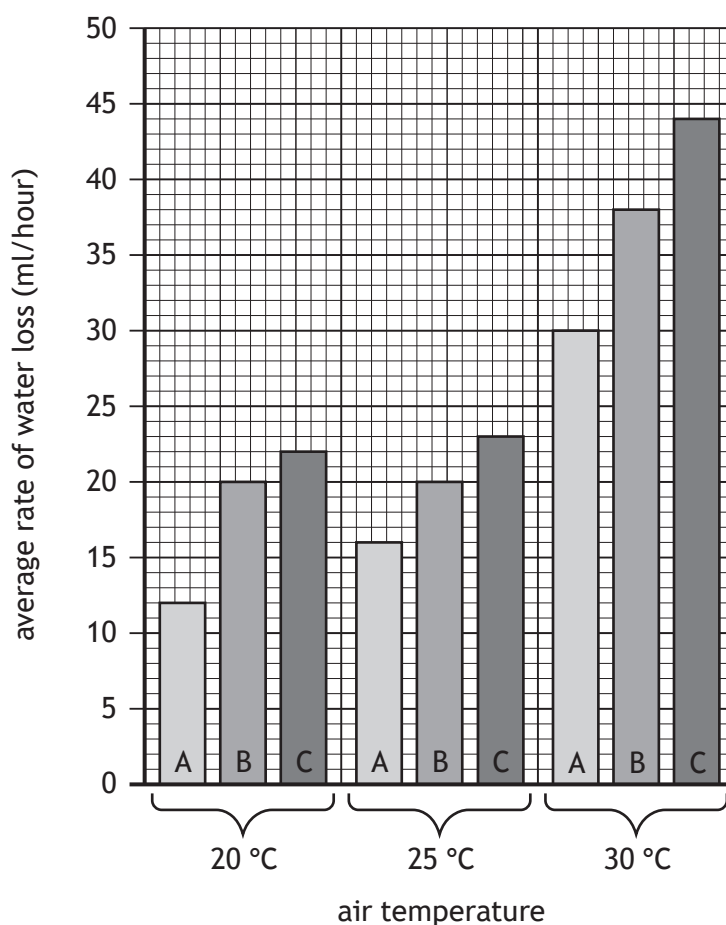
1



* X 8 0 7 7 5 0 1 1 5 *

10. (a) An investigation was carried out into the average rate of water loss from three species of plant, A, B and C at different air temperatures.

The graph shows the results.



- (i) It was concluded that all three plant species showed an increase in the average rate of water loss as the air temperature increased.

Using data from the graph, explain why this was **not** a valid conclusion.

1

- (ii) Assuming all three plant species had the same rate of water intake, predict which species is most likely to survive during a long spell of hot, dry weather.

1

Species _____



10. (a) (continued)

(iii) An evaluation of the investigation was carried out.

Identify a factor that would need to have been controlled during the investigation to ensure the results were valid.

1

(b) (i) Name the process by which water is transported through a plant and evaporates from its leaves.

1

(ii) Name the structures in leaves from which water evaporates.

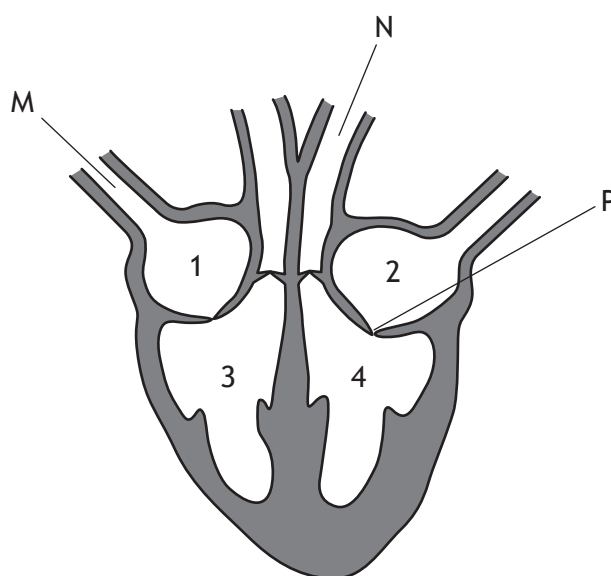
1

[Turn over



* X 8 0 7 7 5 0 1 1 7 *

11. (a) The following diagram represents a human heart.



- (i) Name blood vessel M. 1
- _____
- (ii) M and N are different types of blood vessels. 1
- Identify a feature of blood vessel N that would **not** be found in vessel M.
- _____
- (iii) Explain why it is essential that there is a valve at position P. 2
- _____
- _____
- _____

11. (continued)

- (b) Thicker muscle can push blood further. The average thickness of the outer wall of each chamber was measured as shown below.

1.5 mm 7.0 mm 15.0 mm 1.5 mm

Two students were asked to select the measurements most likely to correspond to each of the chambers. Their responses are shown in the table.

Chamber	Average thickness (mm)	
	Student A	Student B
1	1.5	1.5
2	1.5	1.5
3	15.0	7.0
4	7.0	15.0

Identify which student selected the correct measurements for each of the chambers.

Explain the reason for your choice.

1

Student _____

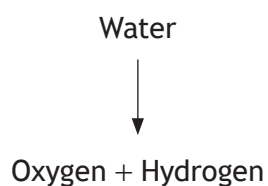
Explanation _____

[Turn over



* X 8 0 7 7 5 0 1 1 9 *

12. The diagram represents a stage in the process of photosynthesis that requires light energy.



- (a) (i) Name the organelles present in leaf cells where this stage takes place.

1

- (ii) Describe what happens to the oxygen and hydrogen produced during this stage.

2

Oxygen _____

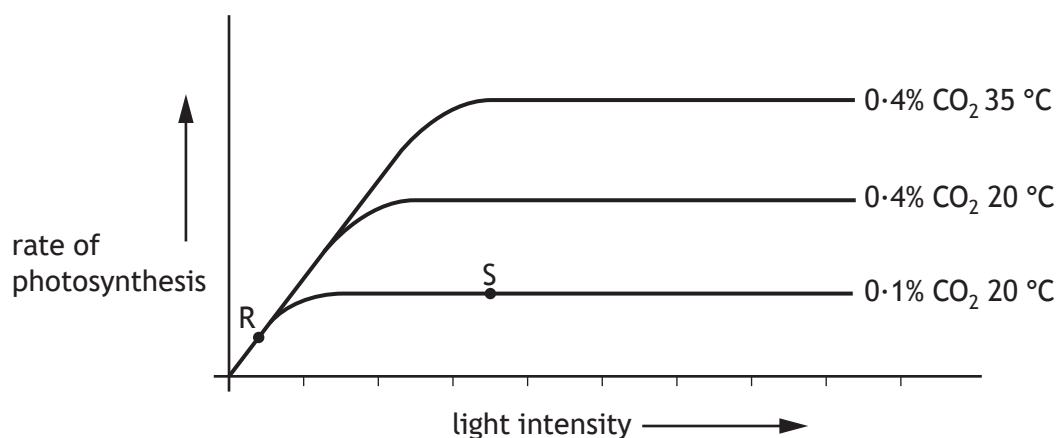
Hydrogen _____



* X 8 0 7 7 5 0 1 2 0 *

12. (continued)

- (b) The graph shows the effect of three different factors on the rate of photosynthesis in a plant.



- (i) Tick one box in each row of the table to indicate which factor is limiting photosynthesis at point R and point S.

2

Point	Limiting factor		
	Temperature	Light intensity	Carbon dioxide concentration
R			
S			

- (ii) Explain why there is an increase in the rate of photosynthesis when there is an increase in the temperature from 20 °C to 35 °C.

2

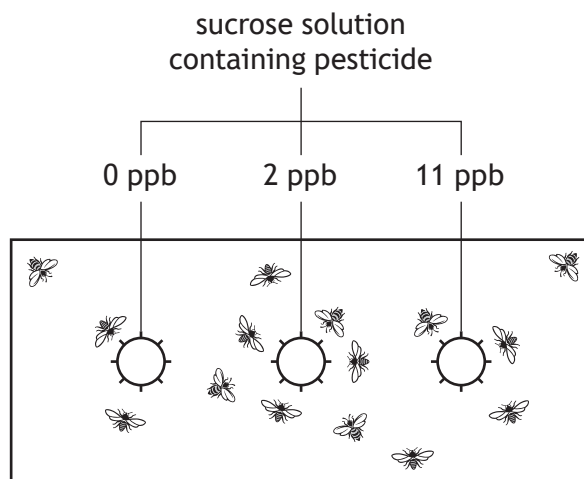
[Turn over

13. Bees and pesticides

Research was carried out to determine the effect of different concentrations of pesticide on the feeding behaviour of bees.

A laboratory was separated into eight identical areas. Three feeding containers, with equal concentrations of sucrose solution, were placed in each area. Each solution was contaminated with a different concentration of pesticide, 0 parts per billion (ppb), 2 ppb, or 11 ppb.

The diagram shows how each area was set up.



Every day bees were released and allowed to feed freely from any of the containers in their area for 6 hours. The volume of sucrose solution consumed from each container was measured daily over a period of 10 days.

Researchers expected to find that bees would feed less on sucrose solution with increasing concentrations of pesticide.

On day 1 the average volume of sucrose solution consumed that was contaminated with 11 ppb of pesticide was 7.5 ml. This was similar to the 7.6 ml of 0 ppb solution consumed, but much more than the 6.4 ml of the 2 ppb solution consumed.

On day 10 the bees consumed an average of 7.7 ml of 0 ppb solution, 10.7 ml of 2 ppb solution and 10.4 ml of 11 ppb solution.

13. (continued)

- (a) Complete the table by adding a column heading and the relevant data from the passage.

2

(An additional table, if required, can be found on page 29.)

	Average volume of sucrose solution consumed (ml)	
	Day 1	Day 10
0		
2		
11		

- (b) (i) State one variable, mentioned in the passage, which was controlled to ensure validity in this investigation.

1

- (ii) Suggest another variable, not already mentioned, which should also have been controlled to ensure validity.

1

- (c) Describe how the data from day 10 did not show the results that the researchers expected.

1

- (d) Pesticides have been detected in the body tissues of bees.

State the term that describes the build-up of these substances in living organisms.

1

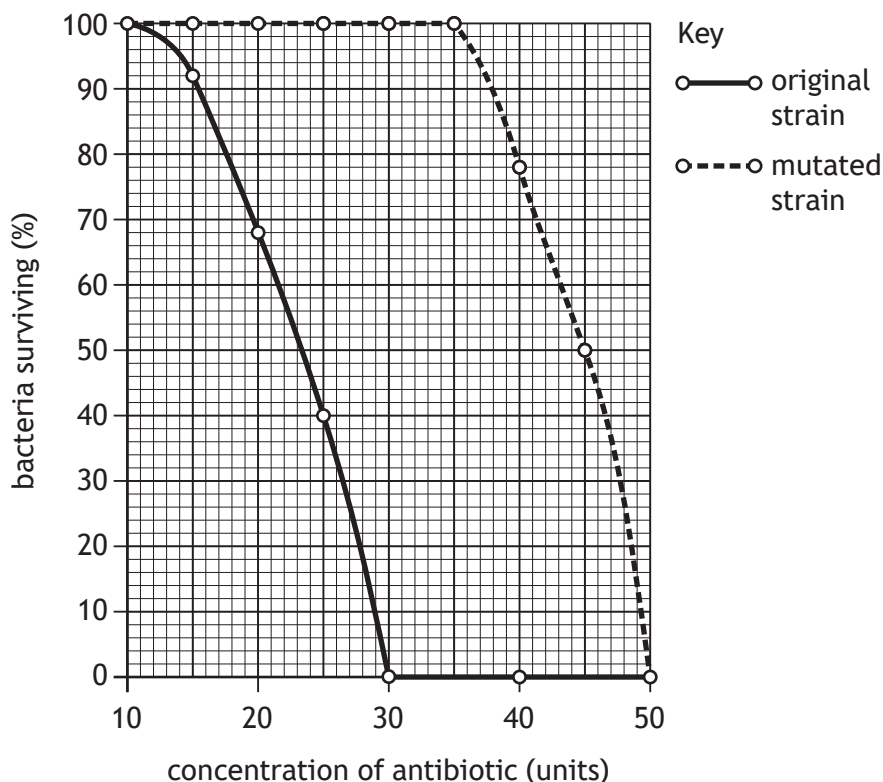
[Turn over



* X 8 0 7 7 5 0 1 2 3 *

14. An investigation was carried out into the effect of increasing antibiotic concentration on the survival of bacteria. Two different strains of bacteria were used, an original strain and a mutated strain.

The percentage of bacteria of each strain surviving after two days is shown in the graph.



- (a) (i) Identify a concentration of antibiotic that has no effect on the survival of either strain of bacteria.

1

_____ units

- (ii) State the minimum concentration of antibiotic that would kill **all** of the bacteria.

1

_____ units

- (iii) Using the information given, describe the advantage the mutation gave the mutated strain over the original strain.

1



* X 8 0 7 7 5 0 1 2 4 *

14. (continued)

- (b) The mutated strain of bacteria arose from the original as a result of mutation.

Give the definition of the term mutation.

1

- (c) State the term given to micro-organisms, such as bacteria, that cause disease.

1

[Turn over



* X 8 0 7 7 5 0 1 2 5 *

15. The Caledonian forest is an ecosystem in Scotland.

(a) Describe what is meant by the term ecosystem.

1

(b) Each organism found in the forest occupies a particular niche.

Identify one biotic factor that helps determine an organism's niche.

1

(c) The area covered with Caledonian forest has decreased over time. In an attempt to reverse this decrease, some areas are being planted with one type of conifer tree, the Scots pine, or a variety of broad-leaved trees.

The table shows the number and types of tree planted in six areas between 2000 and 2010.

Area	Number of trees planted	Type of tree planted
1	6725	Scots pine
2	7900	broad-leaved
3	9430	Scots pine
4	11 845	broad-leaved
5	8475	Scots pine
6	9325	broad-leaved

For the areas planted with conifer trees, calculate the average number planted per area during this time.

1

Space for calculation



* X 8 0 7 7 5 0 1 2 6 *

15. (continued)

(d) Pine martens are omnivores found in the Caledonian forest.



(i) Give the definition of the term omnivore.

1

(ii) Scottish wildcats compete with pine martens for resources.
Name this type of competition.

1

[Turn over for next question]



16. (a) Each food chain starts with a producer.

(i) State the meaning of the term producer.

1

(ii) Name the chemical in the cells of producers that traps light energy.

1

(b) Only 4.8% of light energy landing on a birchwood is absorbed by leaves. This is converted to chemical energy.

Calculate the total light energy landing on the leaves if they contain 27 000 units of chemical energy.

1

Space for calculation

_____ units

(c) The diagram shows a pyramid of energy for a typical food chain.



Explain why a pyramid of energy always has this shape.

1

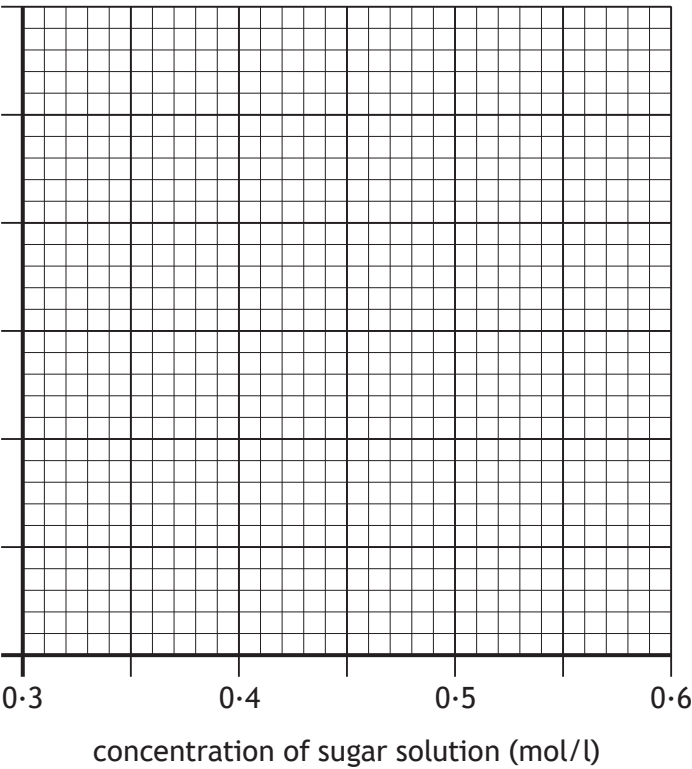
[END OF QUESTION PAPER]



* X 8 0 7 7 5 0 1 2 8 *

ADDITIONAL SPACE FOR ANSWERS AND ROUGH WORK

Additional grid for question 2 (b)



Additional table for question 13 (a)

	Average volume of sucrose solution consumed (ml)	
	Day 1	Day 10
0		
2		
11		

MARKS

DO NOT
WRITE IN
THIS
MARGIN

ADDITIONAL SPACE FOR ANSWERS AND ROUGH WORK



* X 8 0 7 7 5 0 1 3 0 *

MARKS

DO NOT
WRITE IN
THIS
MARGIN

ADDITIONAL SPACE FOR ANSWERS AND ROUGH WORK



* X 8 0 7 7 5 0 1 3 1 *

[BLANK PAGE]

DO NOT WRITE ON THIS PAGE

Acknowledgement of copyright

Question 15 Eric Isselee/shutterstock.com



* X 8 0 7 7 5 0 1 3 2 *