



National
Qualifications
2024

X804/75/11

Art and Design

TUESDAY, 28 MAY
12:30 PM – 2:00 PM

Total marks — 50

SECTION 1 — EXPRESSIVE ART STUDIES — 25 marks

Attempt Question 1 and ONE other question.

SECTION 2 — DESIGN STUDIES — 25 marks

Attempt Question 7 and ONE other question.

Write your answers clearly in the answer booklet provided. In the answer booklet you must clearly identify the question number you are attempting.

You may use sketches to illustrate your answers.

Use **blue** or **black** ink.

Before leaving the examination room you must give your answer booklet to the Invigilator; if you do not, you may lose all the marks for this paper.



* X 8 0 4 7 5 1 1 *

SECTION 1 — EXPRESSIVE ART STUDIES — 25 marks

Attempt this question.

1. Identify **two artworks** by different artists that you have studied. These should be based on similar *subject matter* and/or the same *theme*.

(a) With reference to these two selected artworks, comment on:

- *composition/arrangement*
- *colour*
- *mood and atmosphere*.

Which of the two artworks do you find most appealing? Give **two** justified reasons.

10

(b) Select **one artist** from part (a).

Identify **two** influences on this artist **and** describe how these influences can be seen in any of their work.

5

SECTION 1 — EXPRESSIVE ART STUDIES (continued)

Attempt ONE question from Q2, Q3, Q4, Q5 or Q6.

Read your selected question and the notes on the image carefully.

Image for Q2



A Sunny Day in Winter (1889) by Fritz Müller-Landeck
oil paint on canvas (61 × 89 cm)

2. Comment on this painting, referring to:

- *line*
- *colour*
- *media handling and/or techniques.*

What is your opinion on the mood and atmosphere of this painting? Give two justified reasons.

10

[Turn over

SECTION 1 — EXPRESSIVE ART STUDIES (continued)

Image for Q3



An Eye on the Street, Glasgow (boys in back lane with burning stick) (1968) by David Peat
black and white photograph (25 × 38 cm)

3. Comment on this photograph, referring to:

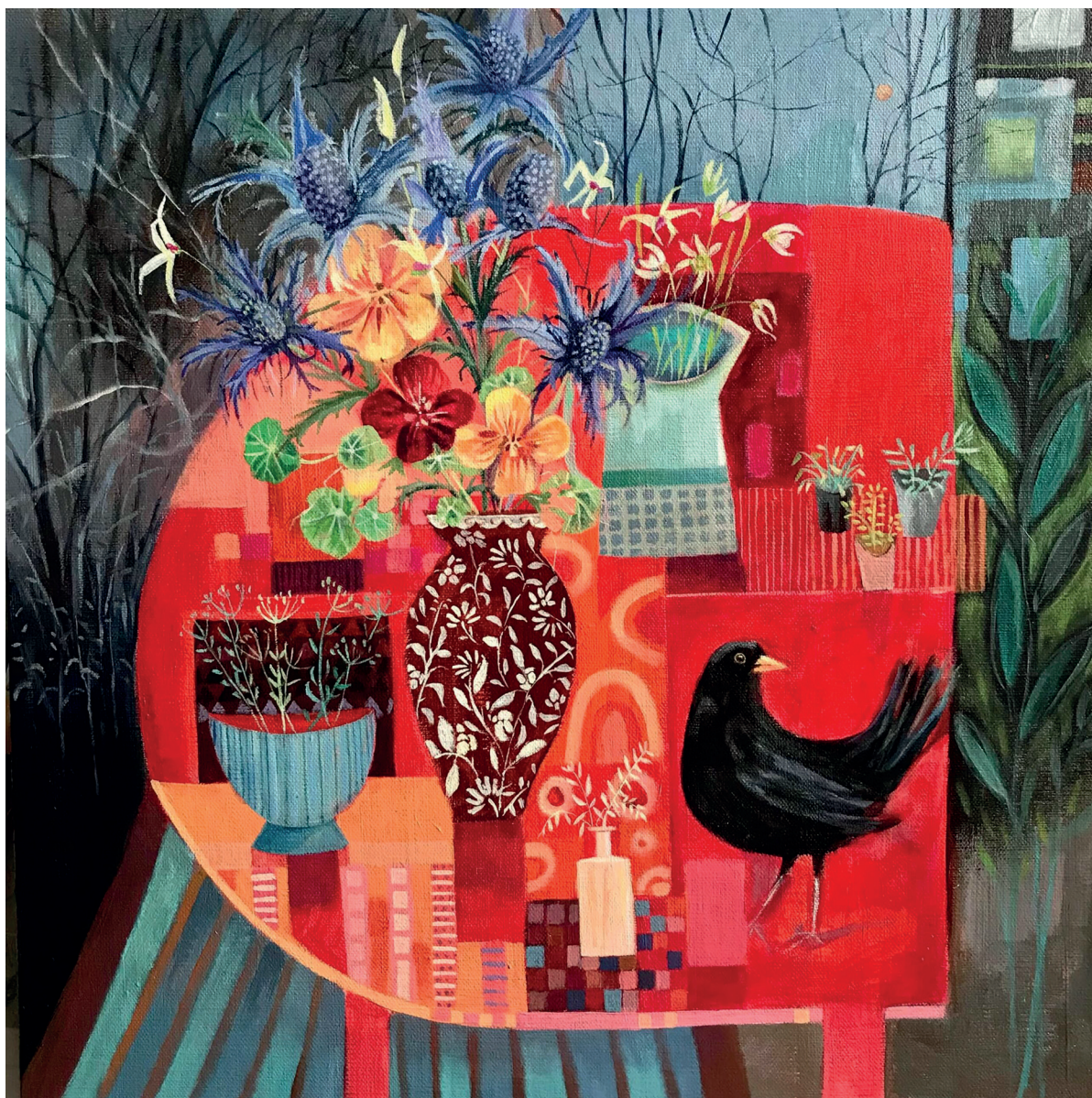
- *subject matter*
- *composition*
- *tone.*

What does this photograph communicate to you? Give **two** justified reasons.

10

SECTION 1 — EXPRESSIVE ART STUDIES (continued)

Image for Q4



Red Table (2021) by Morag Stevenson
acrylic on board (40 × 40 cm)

4. Comment on this painting, referring to:

- *composition*
- *pattern*
- *colour.*

What is your opinion on the choice of subject matter used in this painting? Give **two** justified reasons.

10

Image for Q5



Geraniums (2018) by Ruth Murray
oil paint on canvas (190 × 150 cm)

5. Comment on this painting, referring to:

- *subject matter*
- *colour*
- *line*.

What is your opinion on the visual impact of this painting? Give two justified reasons.

10

Images for Q6



Gay Liberation (1980) by George Segal
painted bronze (life-size)

6. Comment on this sculpture, referring to:

- *subject matter*
- *materials and/or techniques*
- *pose and facial expression.*

What is your opinion on the success of this sculpture? Give two justified reasons.

10

SECTION 2 — DESIGN STUDIES — 25 MARKS

Attempt this question.

7. Identify **two designs** by different designers that you have studied who have worked in the same design area.

(a) With reference to these two selected designs, comment on:

- *function*
- *materials and/or techniques*
- *visual impact.*

Which of the two designs is most successful? Give **two** justified reasons.

10

(b) Select **one designer** from part (a).

Identify **two** influences on this designer **and** describe how these influences can be seen in any of their work.

5

Attempt ONE question from Q8, Q9, Q10, Q11 or Q12.

Read your selected question and the notes on the image carefully.

Image for Q8



Cogheart book cover (2016) by Becca Stadtlander

8. Comment on this book cover design, referring to:

- *imagery*
- *lettering*
- *layout*.

What is your opinion on who might be the target audience for this book cover?
Give two justified reasons.

SECTION 2 — DESIGN STUDIES (continued)

Images for Q9

*Electric Scooter (2021) by Vespa*

Materials: steel frame, rubber, leather and chrome
(weight: 130 kg, dimensions: 187 × 74 × 115 cm)

9. Comment on this scooter design, referring to:

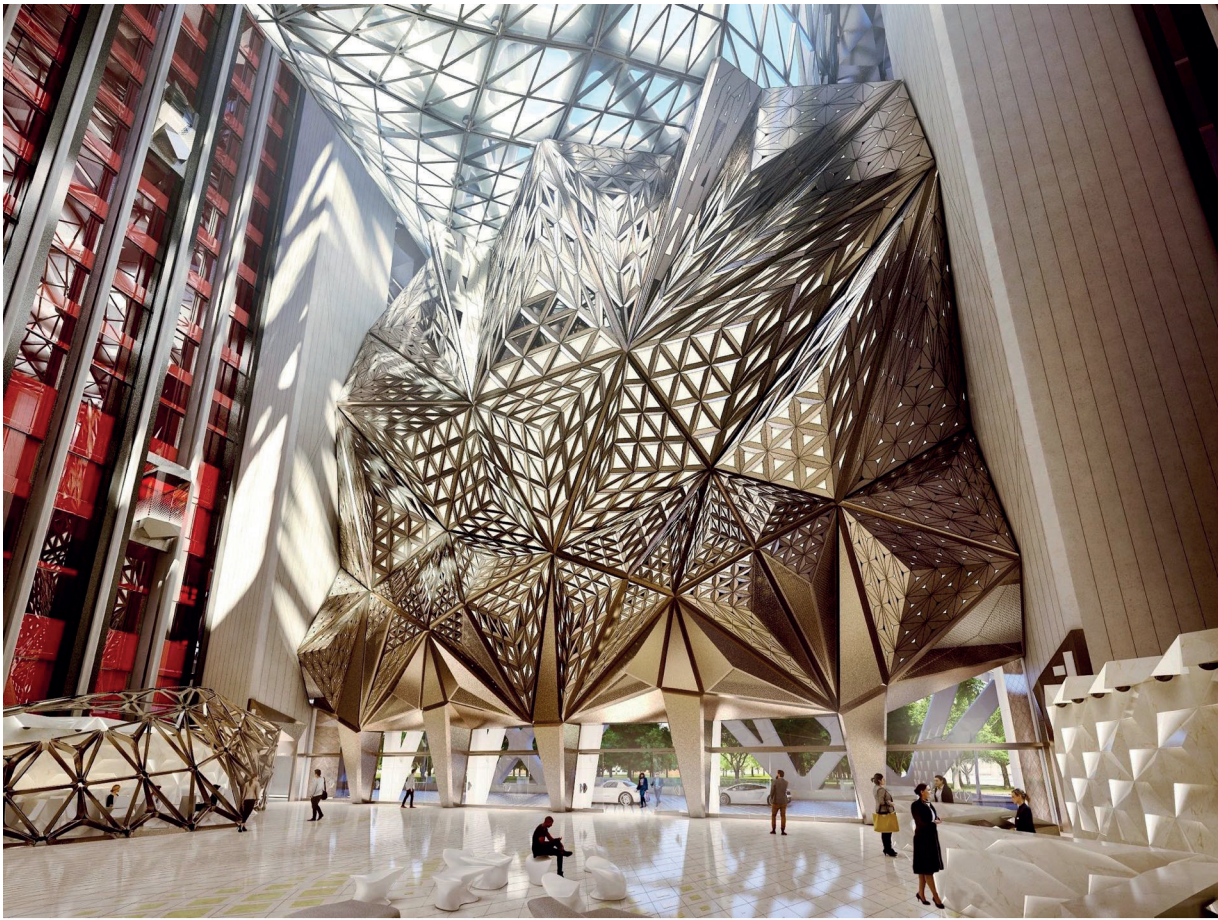
- *fitness for purpose*
- *style*
- *materials.*

What is your opinion on who might be the target market for this scooter? Give **two** justified reasons.

10

SECTION 2 — DESIGN STUDIES (continued)

Images for Q10



Morpheus Hotel, Macau, China (2018) by Zaha Hadid Architects

Materials: steel, glass, concrete and aluminium

10. Comment on this hotel design, referring to:

- *sources of inspiration*
- *materials and/or techniques*
- *form.*

What is your opinion on the visual impact of this hotel? Give **two** justified reasons.

10

SECTION 2 — DESIGN STUDIES (continued)

Images for Q11



Capsule Necklace (2016) by Mariko Kusumoto
 Materials: heat set polyester fibre (40 × 30 cm)

11. Comment on this necklace design, referring to:

- *sources of inspiration*
- *materials and/or techniques*
- *colour.*

What is your opinion on the wearability of this necklace? Give **two** justified reasons.

10

Images for Q12



Himalayan Suit (2011) by The North Face

Materials: 800 fill goose down¹, 100% nylon ripstop fabric²

¹ down is a soft type of feather

² ripstop fabric is more resistant to ripping or tearing

12. Comment on this one-piece suit, referring to:

- *wearability*
- *materials*
- *target market.*

What is your opinion on the effectiveness of this one-piece suit? Give **two** justified reasons.

10

[END OF QUESTION PAPER]

[BLANK PAGE]

DO NOT WRITE ON THIS PAGE

[BLANK PAGE]

DO NOT WRITE ON THIS PAGE

[BLANK PAGE]

DO NOT WRITE ON THIS PAGE

Acknowledgement of copyright

- Section 1 Question 2 Painting, “A Sunny Day in Winter (1889)” by Fritz Müller-Landeck. Public Domain.
- Section 1 Question 3 Photograph, “An Eye on the Street, Glasgow (boys in back lane with burning stick)” (1968) by David Peat. Reproduced by kind permission of National Galleries of Scotland/Estate of David Peat © Estate of David Peat.
- Section 1 Question 4 Painting, “Red Table” (2021) by Morag Stevenson.
SQA has made every effort to trace the owners of copyright of this item and seek permissions. We are happy to discuss permission requirements and incorporate any missing acknowledgement. Please contact question.papers@sqa.org.uk.
- Section 1 Question 5 Painting, “Geraniums” (2018) by Ruth Murray. Reproduced by kind permission of Ruth Murray.
- Section 1 Question 6 (image on top) [marco-brivio.photography/Shutterstock.com](https://www.marco-brivio.com/)
(image on bottom) Image of “Gay Liberation” by George Segal is taken from [https://en.wikipedia.org/wiki/Gay_Liberation_Monument#/media/File:Gay_Liberation_Monument_Christopher_Park_19074_\(8419340357\).jpg](https://en.wikipedia.org/wiki/Gay_Liberation_Monument#/media/File:Gay_Liberation_Monument_Christopher_Park_19074_(8419340357).jpg). Photographer: Ted Eytan. Reproduced under Creative Commons Attribution-Share Alike 2.0 Generic.
- Section 2 Question 8 “Cogheart” book cover (2016) by Becca Stadtlander. Published by Usborne Publishing Ltd.
SQA has made every effort to trace the owners of copyright of this item and seek permissions. We are happy to discuss permission requirements and incorporate any missing acknowledgement. Please contact question.papers@sqa.org.uk.
- Section 2 Question 9 Three images of “Vespa Elettrica” by Vespa.
SQA has made every effort to trace the owners of copyright of this item and seek permissions. We are happy to discuss permission requirements and incorporate any missing acknowledgement. Please contact question.papers@sqa.org.uk.
- Section 2 Question 10 (Image on top) Image of Morpheus Hotel, Macau is taken from <https://senatus.net/article/morpheus-hotel-macau-worlds-1st-free-form-exoskeleton-bound-high-rise-architectural-composition/>.
SQA has made every effort to trace the owners of copyright of this item and seek permissions. We are happy to discuss permission requirements and incorporate any missing acknowledgement. Please contact question.papers@sqa.org.uk.
(Three images on bottom) Three images of Morpheus Hotel, Macau are taken from <https://www.zaha-hadid.com/architecture/city-of-dreams-hotel-tower-cotai-macau/>.
SQA has made every effort to trace the owners of copyright of this item and seek permissions. We are happy to discuss permission requirements and incorporate any missing acknowledgement. Please contact question.papers@sqa.org.uk.
- Section 2 Question 11 Three images of “Capsule Necklace” by Mariko Kusumoto. Reproduced by permission of Mariko Kusumoto.
- Section 2 Question 12 Four images of “Himalayan Suit” by The North Face.
SQA has made every effort to trace the owners of copyright of this item and seek permissions. We are happy to discuss permission requirements and incorporate any missing acknowledgement. Please contact question.papers@sqa.org.uk.