



National
Qualifications
2017

X704/75/11

Art and Design

TUESDAY, 30 MAY

1:00 PM – 2:10 PM

Total marks — 40

SECTION 1 — EXPRESSIVE ART STUDIES — 20 marks

Attempt Question 1 and ONE other question.

SECTION 2 — DESIGN STUDIES — 20 marks

Attempt Question 7 and ONE other question.

Write your answers clearly in the answer booklet provided. In the answer booklet you must clearly identify the question number you are attempting.

You may use sketches to illustrate your answers.

Use **blue** or **black** ink.

Before leaving the examination room you must give your answer booklet to the Invigilator; if you do not, you may lose all the marks for this paper.



* X 7 0 4 7 5 1 1 *

SECTION 1 — EXPRESSIVE ART STUDIES — 20 marks

Attempt this question.

1. Artists communicate and express their ideas about their subject in a variety of ways. Identify **two** works by different artists that you have studied. These should be based on similar *subject matter* and/or the same *theme*.

With reference to these works in your answer, compare each artist's use of:

- *colour*
- *media handling and techniques*
- *mood and atmosphere*.

Which of the two works shows the most creative approach? Give **two** justified reasons.

10

Attempt ONE question from Q2, Q3, Q4, Q5 or Q6.

Read your selected question and the notes on the illustration carefully.



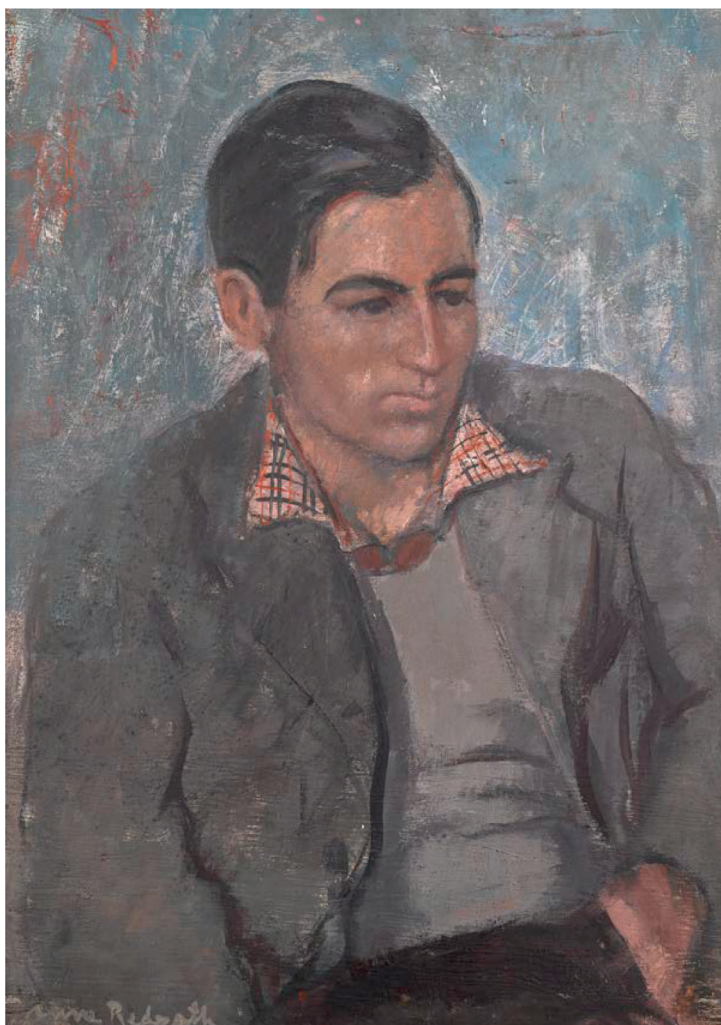
The Emperor Enjoying Himself (1723–1735) by an unknown artist
paint on silk fabric (188 × 102 cm)

2. Artists are often inspired by the world around them. Comment on the ways in which this artist has represented this scene. In your answer, refer to:

- *composition*
- *colour*
- *line*.

What is your opinion on the mood and atmosphere created in this work? Give two justified reasons.

SECTION 1 — EXPRESSIVE ART STUDIES (continued)



Lindsay Michie (c.1947–48) by Anne Redpath
oil on panel 76 × 55.5 cm

3. Artists often paint portraits. Comment on this painting. In your answer, refer to:

- *composition*
- *colour*
- *media handling.*

What does this painting communicate to you about the subject? Give **two** justified reasons.

10

SECTION 1 — EXPRESSIVE ART STUDIES (continued)



Still Life with Palette (1972) by Roy Lichtenstein
oil on canvas (152 × 243 cm)

4. Artists have often experimented with new ways of representing everyday objects. Comment on how the artist has responded to this still life. In your answer, refer to:

- *composition*
- *shape*
- *colour.*

What is your opinion of this style of painting? Give **two** justified reasons.

10

[Turn over



front view



back view

Head of Invention (1989) by Eduardo Paolozzi
bronze and wood (3 × 2 × 2 m)

5. Artists often represent the human head in different ways. Comment on this sculpture. In your answer, refer to:

- *subject matter*
- *form*
- *scale.*

What does this sculpture communicate to you? Give **two** justified reasons.

10

SECTION 1 — EXPRESSIVE ART STUDIES (continued)



Eos, A Favourite Greyhound of Prince Albert (1841) by Sir Edwin Henry Landseer
oil on canvas (112 × 143 cm)

6. The subject of animals has inspired many artists. Comment on this painting. In your answer, refer to:
- *composition*
 - *colour*
 - *media handling.*

What is your opinion of the mood and atmosphere created? Give two justified reasons.

10

[Turn over

SECTION 2 — DESIGN STUDIES — 20 marks

Attempt this question.

7. Designers have to show creativity in their approach to developing designs. Identify **two** designs by different designers that you have studied who have worked in the same design area.

With reference to these designs, in your answer compare both designs in terms of:

- *visual impact*
- *fitness for purpose*
- *target market/audience.*

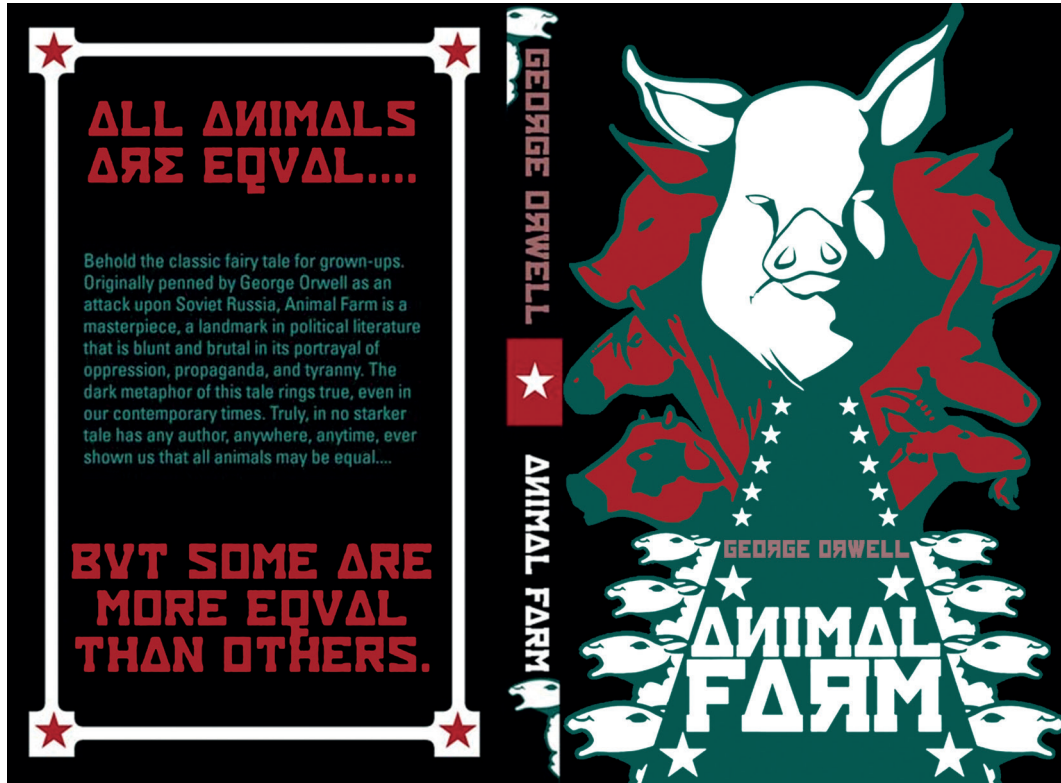
Which of these two designs is the most successful? Give **two** justified reasons.

10

SECTION 2 — DESIGN STUDIES (continued)

Attempt ONE question from Q8, Q9, Q10, Q11 or Q12.

Read your selected question and the notes on the illustration carefully.



Animal Farm book cover (2007) designed by Jed-Angelo Q. Segovia

8. Graphic designers often work with images and text to create visual impact. Comment on this design. In your answer, refer to:

- *imagery*
- *lettering*
- *layout*.

How successful is this design in creating visual impact? Give two justified reasons.

10

[Turn over

SECTION 2 — DESIGN STUDIES (continued)



Connects to wall mounted charger



Dyson DC59 cordless handheld vacuum cleaner (2013)
designed by James Dyson & Associates

plastic and aluminium (length: up to 120 cm, weight: 2.1 kg)

9. Designers have to consider different design issues. Comment on this design. In your answer, refer to:

- *fitness for purpose*
- *style*
- *materials.*

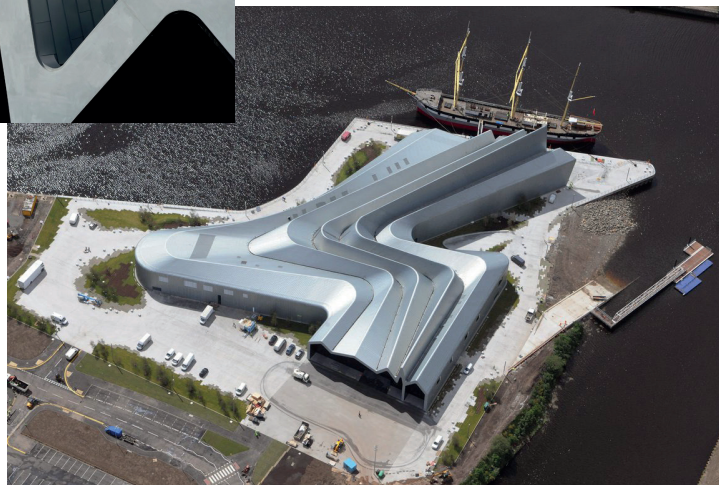
In your opinion, how successful is this design? Give two justified reasons.

10



detail of roof

aerial view



Riverside Museum, Glasgow (2011) designed by Zaha Hadid
materials: steel frame, zinc cladding and glass

10. Buildings are designed for different purposes. Comment on this design for a museum. In your answer, refer to:

- *scale*
- *form*
- *materials.*

How well has the designer created visual impact? Give **two** justified reasons.

10

SECTION 2 — DESIGN STUDIES (continued)



Wedding jewellery set (2015) by an unknown designer
gold and semi-precious crystal

11. Jewellery can be designed for a variety of occasions. Comment on this design. In your answer, refer to:

- *visual impact*
- *target market*
- *wearability.*

What is your opinion of the style of this jewellery? Give **two** justified reasons.

10

SECTION 2 — DESIGN STUDIES (continued)



Costume design for Starlight Express¹ (1984) by John Napier

Lycra² and lightweight foam

¹a musical stage production

²stretchy man-made fabric

12. Costume designers have to create outfits for different types of productions. Comment on this design. In your answer, refer to:

- *sources of inspiration*
- *visual impact*
- *wearability.*

What does this costume communicate about the character? Give two justified reasons.

10

[END OF QUESTION PAPER]

[BLANK PAGE]

DO NOT WRITE ON THIS PAGE

[BLANK PAGE]

DO NOT WRITE ON THIS PAGE

ACKNOWLEDGEMENTS

Section 1 Question 2 – Painting, “The Emperor Enjoying Himself” (1723-1735) by anonymous court artist.

SQA has made every effort to trace the owners of copyright materials in this question paper, and seek permissions. We will be happy to incorporate any missing acknowledgements.
Please contact janine.anderson@sqa.org.uk.

Section 1 Question 3 – Painting, “Lindsay Michie” (c.1947-48) by Anne Redpath.

SQA has made every effort to trace the owners of copyright materials in this question paper, and seek permissions. We will be happy to incorporate any missing acknowledgements.
Please contact janine.anderson@sqa.org.uk.

Section 1 Question 4 – Painting, “Still Life with Palette” (1972) by Roy Lichtenstein. Reproduced by permission of DACS. © Estate of Roy Lichtenstein/DACS 2017.

Section 1 Question 5 (Top image) – Image, “Head of Invention” by Eduardo Palazzo, taken by Dposte46. Used under Creative Commons Attribution 3.0 Unported license.

Section 1 Question 5 (Bottom image) – Photograph of sculpture by Eduardo Palazzo is taken from <http://michaelgoodes.blogspot.co.uk/2012/07/quirky-london-part-3.html>. Reproduced by kind permission of Michael Goodes.

Section 1 Question 6 – Painting, “Eos, A Favourite Greyhound of Prince Albert” (1841) by Sir Edwin Landseer. Reproduced by permission of Royal Collection Trust. Royal Collection Trust/© Her Majesty Queen Elizabeth II 2017.

Section 2 Question 8 – Image of book cover designed by Jed-Angelo Q. Segovia is reproduced by permission of Jed-Angelo Q. Segovia.

Section 2 Question 9 – Images of Dyson DC59 cordless handheld vacuum cleaner are reproduced by kind permission of Dyson Technology Limited.

Section 2 Question 10 (Top image) – Image of Riverside Museum, Glasgow, is taken from www.bam.co.uk/how-we-do-it/case-study/riverside-museum. Reproduced by kind permission of BAM Construct UK Ltd.

Section 2 Question 10 (Middle image) – Image of Riverside Museum, Glasgow, is taken from www.huftonandcrow.com/projects/gallery/riverside-transport-museum. Reproduced by kind permission of Hufton and Crow.

Section 2 Question 10 (Bottom image) – Aerial image of Riverside Museum, Glasgow is reproduced by kind permission of Hawkeye EZS.

Section 2 Question 11 – Image of *Eternal Amulet Collection* is taken from www.kylescollection.com. Reproduced by kind permission of Kyles Collection.

Section 2 Question 12 – Image of costume design for Starlight Express.

SQA has made every effort to trace the owners of copyright materials in this question paper, and seek permissions. We will be happy to incorporate any missing acknowledgements.
Please contact janine.anderson@sqa.org.uk.